



COMPANY PROFILE

Our Philosophy

OrbiMaps Ltd specializes in providing professional Geographic Information Systems and Geo-database development, Remote Sensing, Land surveying, Digital Mapping, Valuation, Civil Engineering and Project Management. Our business model focuses on the use of modern and technologically advanced methods that utilise the vast experience of the various specialists in the different fields. The company

also boasts a large pool of highly qualified consultants that blend with our in-house experts to provide the best services for our clients. The company is also involved in the development of applications that solve problems related to land, real estate, utility and facility management as well as training decision makers and professionals on the use of geomatics and spatial analysis.

GOALS

Our primary goal is provision of the most economical services to our clients with an emphasis on quality and accuracy of the final product. We aim to be thorough and timely in our work process to ensure credibility and reliability in all the fields we cover with the help of our extensive database. At OrbiMaps we believe that communication and effective project management are key factors for the most successful completion of every project. Our management team of individuals are successful experts in their different industries and their experience provides the insight to navigate different projects from the point of inception through to the final service delivery resulting in the best satisfaction for our clients. Our client satisfaction is crucial in order to build strong business relationships which we value as the ultimate measure of our success.

VISION

Our vision is to provide the accurate and efficient professional services in the fields of Geographic Information Systems (GIS), Remote Sensing, Valuation, land & Engineering surveying, Physical and environmental planning, Database Development Systems (DBDS), Mapping and Civil Engineering to our clients. OrbiMaps Ltd. Looks to achieve this by providing dynamic solutions using the latest technology so as to stay in tandem with the fast changing world alongside the opportunities availed through new technologies to ensure our clients are accorded with the most accurate solutions in an efficient manner, within the most optimal timeframe feasible.

SERVICES

The services offered are as follows among other associated fields;

- Geographic Information Systems (GIS) and Geo-database development
- Land Surveying and Mapping
- Spatial Analysis
- Remote Sensing and Aerial Photography
- Environmental and Physical planning
- Engineering Consulting & Project Management
- Valuation and Urban Planning Services
- Land Legal Services



GIS AND GEO-DATABASE DEVELOPMENT

A Geographic Information System (GIS) is a system designed to capture, store, manipulate, analyse, manage and present all types of geographically referenced data. Basically, GIS is the merging of cartography, statistical analysis and database technology. Using GIS allows people to see the world in a different way by mapping the position and quantity of things, mapping the density of people and objects and mapping any changes that occur. GIS also allows us to find out what is happening inside a specific area or nearby to a specific area. More specifically, GIS is used through:

- Environmental Geography - to analyse the impact people have on the environment.
- Physical Geography - to study the elements of atmosphere, biosphere and geosphere.
- Emergency Management Information System - to give real time data to emergency responders about the geographical layout.
- Health Geography - to use geographical information to study health related issues such as disease and illness.

LAND SURVEYING AND MAPPING

The more traditional land surveying strand of Geomatics engineering is concerned with the determination and recording of boundaries and areas of real property parcels, and the preparation and interpretation of legal land descriptions. We provide a variety of surveying services including wetland delineation, boundary, as built, tree, topographic surveys, staking of roadway and drainage projects. We provide surveying services for the developments of both residential and commercial properties to engineering, architectural and residential design firms. At Orbimaps our core competencies include the following types of surveys:

CADASTRAL SURVEYS

ENGINEERING SURVEYS

HYDROGRAPHIC SURVEYS

TOPOGRAPHICAL SURVEYS

CONTROL SURVEYS

UTILITY SURVEYS



URBAN PLANNING

PROPERTY SURVEYS

To ensure accuracy, we determine the best tool to use for the data collection or survey process depending on the scale of the assignment and the purpose of the project. The survey equipment we use includes; GPS Systems, Real-Time Kinematic Surveys, Lidar (Terrestrial and Aerial), Remote Sensing (Satellite Imagery), Total Stations, Basic Tape, Levels.



REMOTE SENSING AND AERIAL PHOTOGRAPHY

Remote Sensing is the acquisition of information about object or phenomenon without making physical contact with the object and thus in contrast to on site observation. It is applied in various fields including geography, land surveying and most Earth Science disciplines (hydrology, ecology, oceanography, glaciology, geology). Types of remote sensing include optical, thermal and radar.

Hyperspectral remote sensing is a specific sector of remote sensing identified by the corresponding sensors used to capture data. Its applications are environmental and Ecological, Geology, Agriculture, Atmospheric conditions, Coastal & inland waters, snow/ice, biomass estimation etc.

The electromagnetic spectral region observed by hyperspectral sensors is a small portion of the full spectrum; usually it ranges from 0.4 to 2.5 μm . The fact that these sensors are sensitive in this portion of the spectrum, lays with the atmospheric conditions of our planet. The atmosphere allows (transmitted) and blocks (absorbed) specific ranges of wavelengths. The transmitted wavelengths reach the Earth surface and are reflected by it. The hyperspectral sensors record the reflected radiation.

The company applies this technology for the following applications;

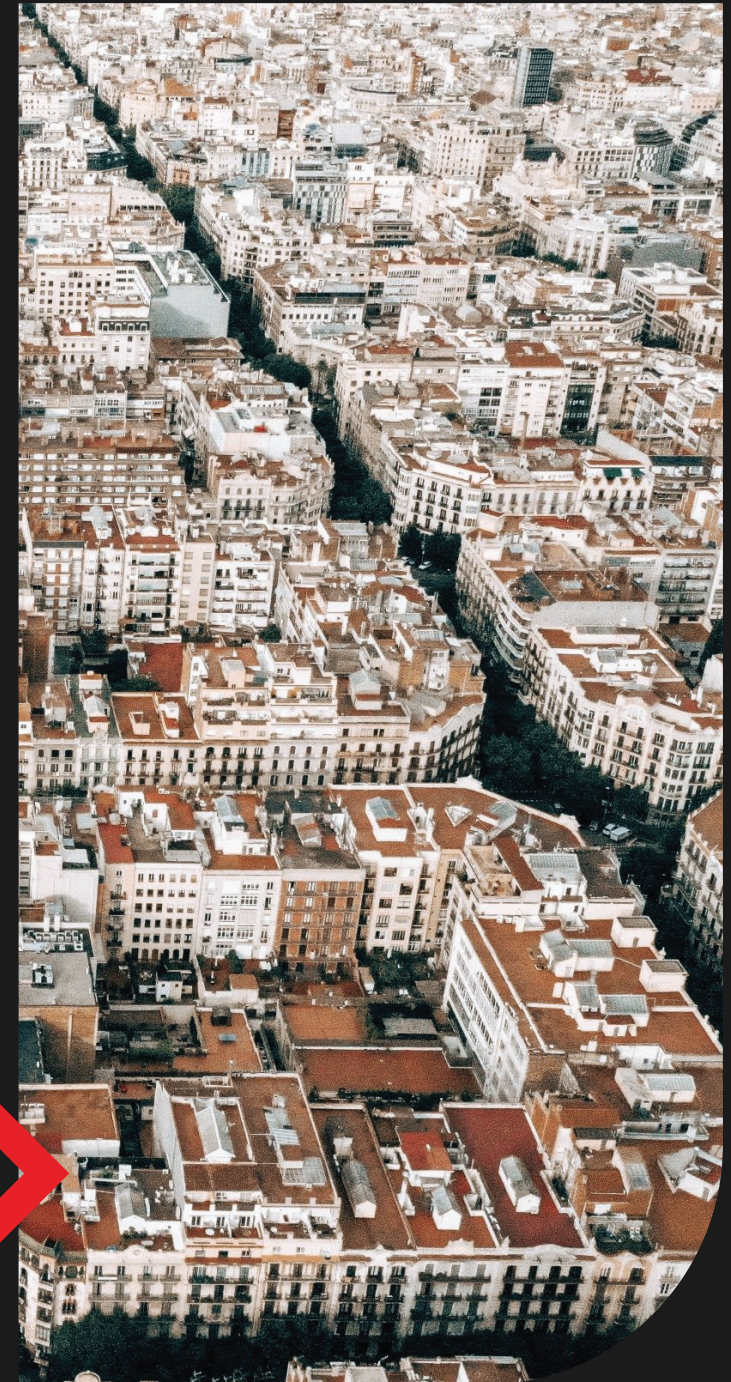
VALUATION AND URBAN PLANNING SERVICES

The firm handles all valuation services that are required by our clients to the most current standards in a timely and professional manner. We prepare valuations for the following;

- Secured Lending Facility
- Financial Reporting/Bookkeeping
- Insurance of buildings, equipment, plant and machinery
- Court Arbitration/Litigation purposes involving real property
- Sale or Purchase of land, buildings, plant and machinery

The company also offers consultancy services for property rates assessment for urban authorities or local government. We specialise in valuations for compensation for land and landed property; whether for compulsory acquisition by government or private entities, including the preparation of RAPs and ARAPs.

OrbiMaps Ltd. Also carries out social and environmental assessments for infrastructural projects. All this is done with a people-centric perspective with heavy emphasis on environmental sustainability. We believe any projects undertaken currently need to cater for today's needs taking into account both people and the environment; without compromising the future.



ENGINEERING CONSULTING

The firm does take on civil engineering projects i.e. design, construction and maintenance of structures (buildings, roads, water works et cetera). This arm of the company also offers

Project management services as well as consultancy services as required.

The firm offers a wide range of mechanical and electrical engineering services like generator sales, maintenance and load sizing, facility design and layout of factory space, industrial maintenance and energy audit, capacity optimisation etc. Our diverse engineering team has built up experience handling a range of projects, from start to finish, through the application of physical and scientific principles to solve problems and achieve optimal project completion and/or operation.



LAND LEGAL SERVICES

The firm offers a myriad of legal services related to the acquisition, registration and utilisation of interests and rights in land in Uganda across all tenures of land and forms of land holding. Our aim is to provide a one stop shop service against reliable time frames and ascertainable costs. We provide the following services in this regard;

- Searches on registered land
- Registration of transfers on certificates of title.
- Registration of mortgages including normal mortgages, third party mortgages, tripartite mortgages, among others.
- Release of mortgages.
- Remove of expired mortgages

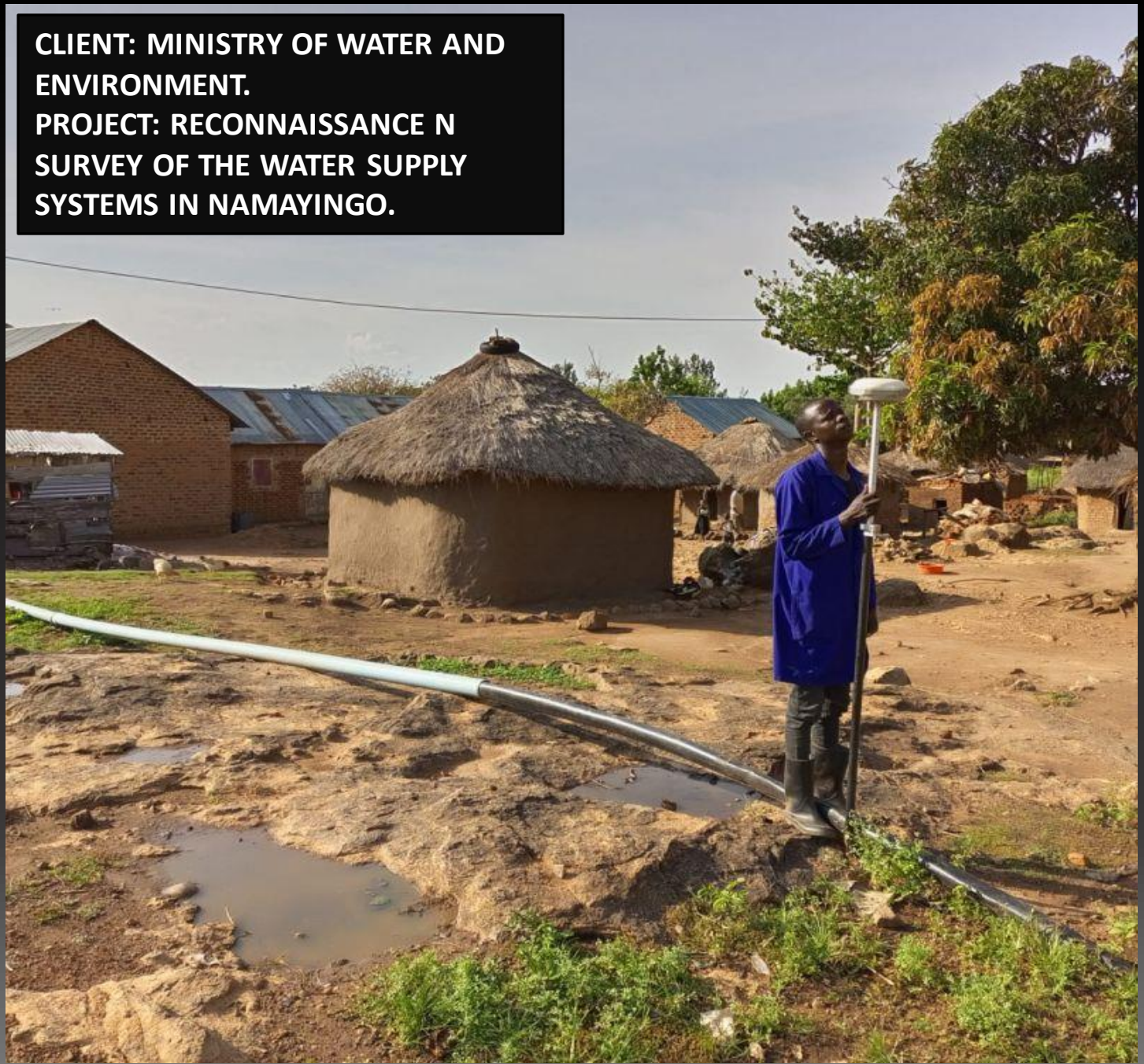




**CLIENT: ADJUMANI DISTRICT
LOCAL GOVT
PROJECT: DESIGN AND BUILD OF
ERAJI BRIDGE**

SURVEYING PROJECTS

**CLIENT: MINISTRY OF WATER AND
ENVIRONMENT.
PROJECT: RECONNAISSANCE N
SURVEY OF THE WATER SUPPLY
SYSTEMS IN NAMAYINGO.**





Our Lady of Good Counsel

Gayaza, Kampala

Our Lady of Good Counsel's Garden 2

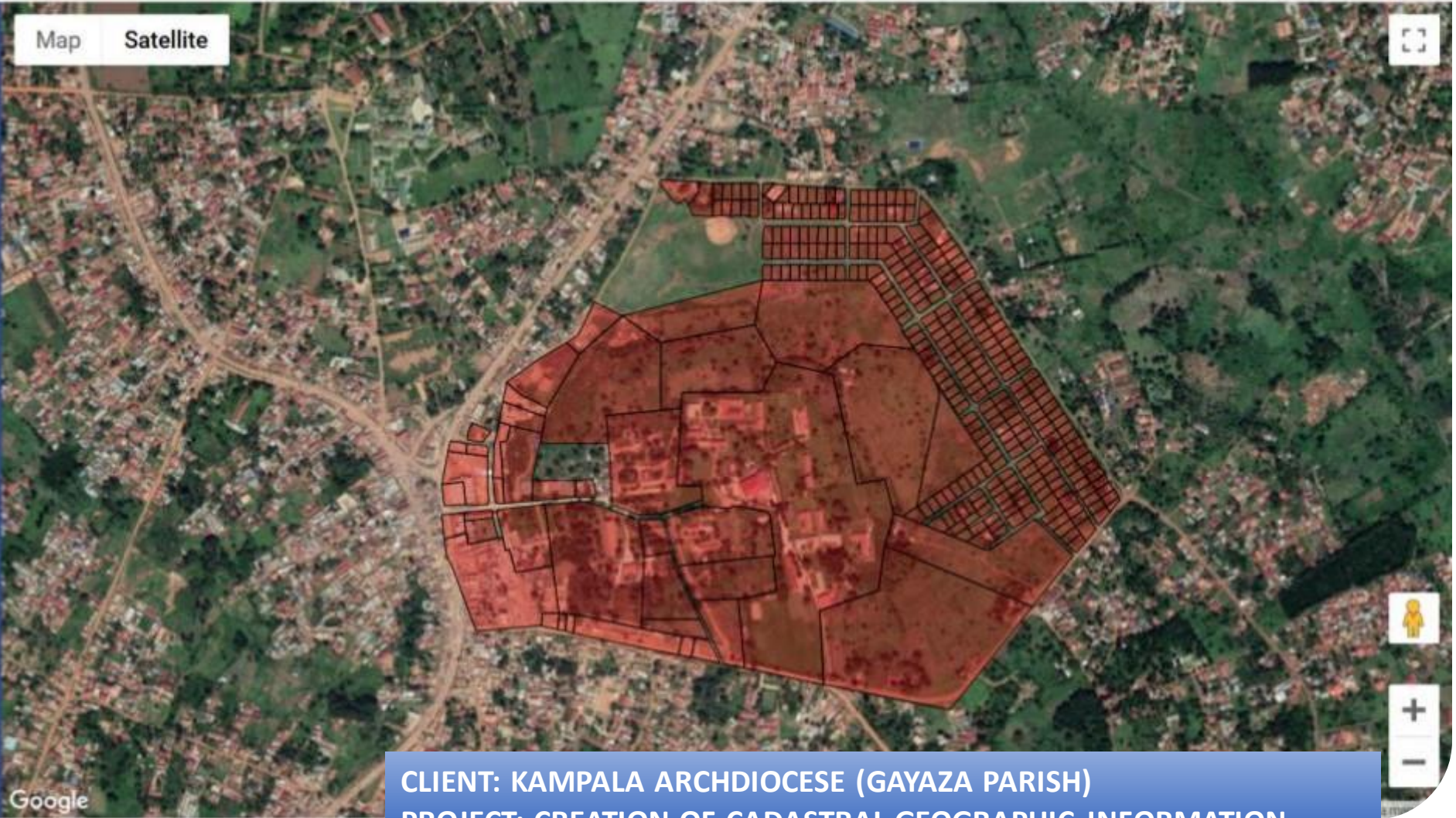
PLOT	AREA(ACRES)	RATE/ACRE
------	-------------	-----------

Plot Area
Plot Hectares

History

Generate Report

Map Satellite



Google
Google

CLIENT: KAMPALA ARCHDIOCESE (GAYAZA PARISH)
PROJECT: CREATION OF CADASTRAL GEOGRAPHIC INFORMATION SYSTEM





**CONSTRUCTION
PROJECTS**

OUR CLIENTS





Reach us Via

 +256-773-137938

 orbimapsltd@gmail.com

 P. O. Box 2344 Kampala

 Plot 20 Kampala Road,
Kampala-Uganda